

## 8X8 Lean To Shed Plans

### DRAWING INDEX

Page 1	Title Sheet
Page 1.1	Notes
Page 2	Floor Plan
Page 3	Exterior Elevations
Page 4	Skid Foundation Plan
Page 5	Floor Framing Plan, for skid foundation
Page 6	Wall Framing Plans
Page 7	Roof Framing and Sheeting Plans
Page 7.1	Rafter Birdsmouth Template
Page 8	Section
Page 8.1	Details

- Note:
- The main plans are drawn showing a Skid Foundation and Wood Framed Floor. Also included are plans for :
  - Pre-cast Concrete Pier Foundation and Wood Floor
  - Concrete Foundation and Concrete Floor
  - Concrete Pier and Wood Framed Floor
- The drawing page size and scale may change depending on the software used to view it. Tip, reset the page scaling in the print settings to None.
- These plans are for personal use only.
- All material sizes are shown as size to be purchased, find cut sizes from the plans.
- If you use one of the alternate foundations then you will not need to purchase the materials for the other types of foundations and floors.

### PURCHASING MATERIALS

The material lists provided with these plans are exact. You may consider purchasing a few extra of each of the boards so if there are any mistakes or you simply build it differently than shown on the plan you will not need to run to the lumber yard for a single board.

NAILING SCHEDULE (how many and what size nails to use)		
Connection Type	Nail To Use	Nailing Pattern
Roof Sheathing	8d 2½" vinyl coated	Nailing pattern to be 6in. on center along the edges and 12in. on center in the field (center of the sheet)
Wall Sheathing or Siding	8d 2½" galvanized	Nailing pattern to be 6in. on center along the edges and 12in. on center in the field (center of the sheet)
2x4 Wall Plate To Wall Stud	12d 3 ¼" vinyl coated	2 nails
Trim Boards	8d 2½" vinyl coated	2 nails every 16in.
Rim Board To Floor Joists	12d 3 ¼" vinyl coated	3 nails
Floor Joists To Wood Rails	8d 2½" vinyl coated	3 nails, Toe nailed
Roofing and drip edge	1¼" long 12 gauge ⅜" head	5 nails per shingle

About Nails  
 You can use common or box nails. (common nails are stronger)

- ### DOORS AND WINDOWS
- The door used is a standard 3068 exterior door used in residential construction. The dimensions used when ordering the door are
  - Door size = 3068
  - Door swing shown on plans = left hand (site verify)
  - Jamb size = 4" ( if no interior finish is used)
  - Include Brick mould, this is the exterior trim
  - Threshold, per owner. If a threshold is installed it creates a bump in the doorway but it also seals the door to floor connection better.
- Windows may be added per owner.

- ### TOOLS AND MATERIALS:
- Shovel
  - Level, 4' works best
  - Hammer
  - Ladder
  - Pencil
  - Tape Measure
  - Framing square
  - Chalk Line
  - Utility knife
  - Circular saw
  - Electric Drill with screw driver bit
  - Grabber Screws (to build the door)
  - Nails (see nailing schedule)
  - Lumber (see materials lists on plans pages)
  - Paint tools and materials
  - Caulking
  - Primer
  - Paint
  - ⅜" Paint roller and Roller cover
  - Paint roller pan
  - 2" Paint brush
  - Roofing Tools
  - Tin snips to cut drip edge
  - Door gate hardware per owner

# NOTES CONTINUED:

## MATERIALS NOTATION

Material call outs on the plans are done with a letter and number. The schedules for these callouts are on the most relevant page. For instance the call out for wall studs is W1 and the material take off for it is on the wall framing plans.

Sometimes you will find a callout and the material quantity is not on the same page as the callout. This is to avoid duplicating the material lists.

- W = Wall materials
- R = Roof materials
- F = Foundation and Floor materials

The optional foundation framing plans have their own Foundation and Floor Framing materials lists. If you use an optional foundation you will not use the material list in the main plans for the skid foundation.

## ABBREVIATIONS

These are the definitions for the abbreviations on the shed plans

O.C. or o.c.                      On Center

On center spacing is the distance from the center of the framing board being installed to the center of the next framing board. The on center spacing for walls is typically 16" and the spacing for roofs is typically 24"

O.S.B                              Oriented Strand Board

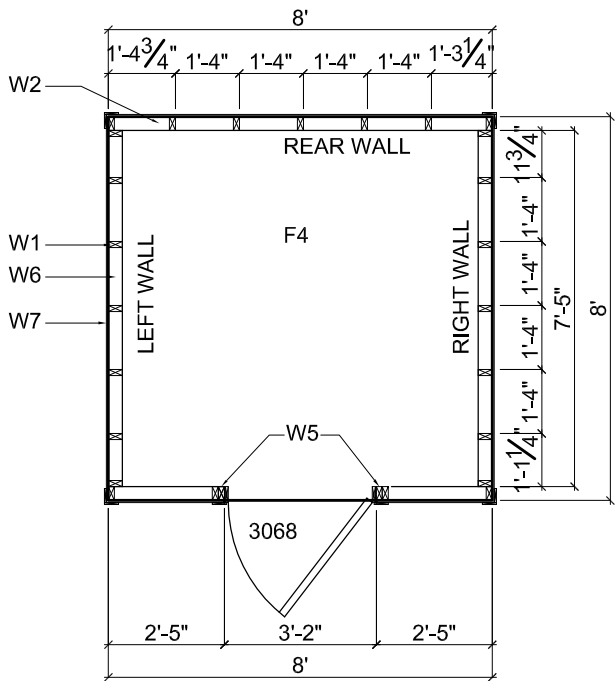
O.S.B. is a lumber product that is similar to plywood. It costs less to make and is therefore less expensive than plywood. O.S.B is used everywhere for sheeting walls and floors and roofs of both residential and commercial buildings.

T.&G.                              Tounge and Groove

Tounge and Groove is the way the edges of some O.S.B and siding boards, when used, are cut so that they can fit together and hold each other. A groove is cut into the edge of the first board and a tounge is cut into the opposite edge. When the boards are laid next to each other they fit together.

P.T.                                  Pressure Treated or simply Treated

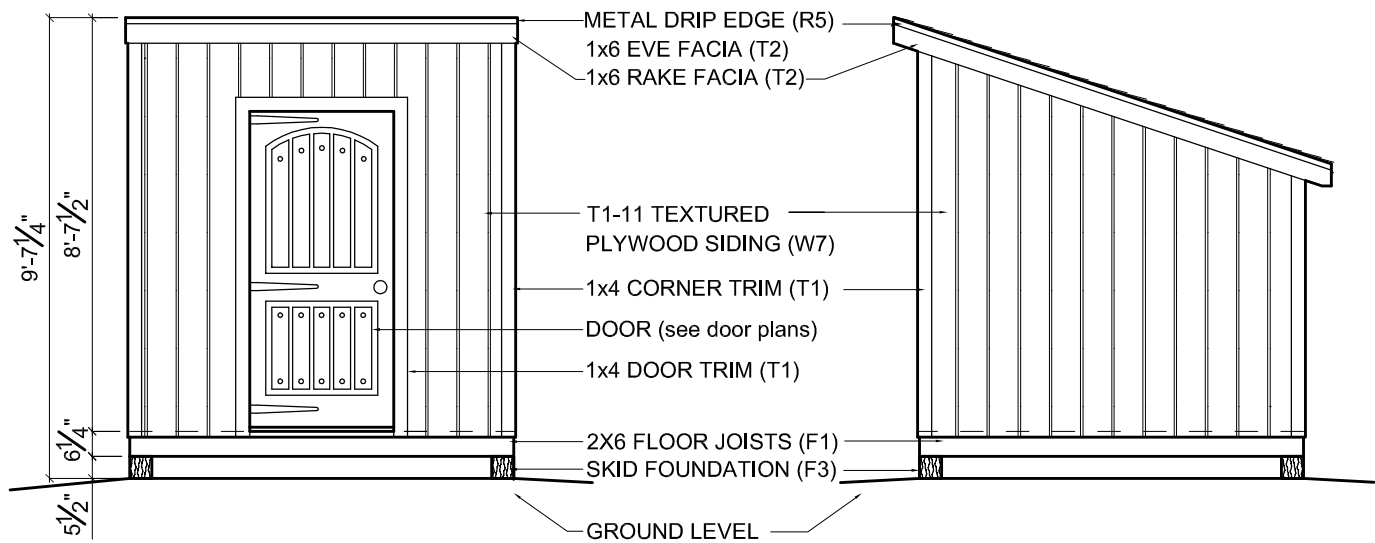
Pressure treated lumber has been soaked in a chemical that helps it resist rotting. It is required by building codes that all lumber coming in direct contact with concrete be pressure treated.



## FLOOR PLAN

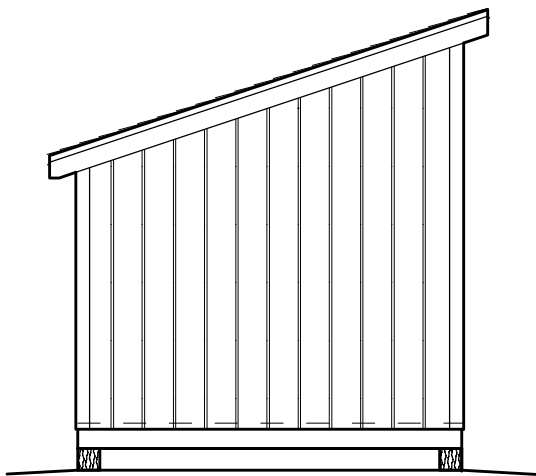
1/4"= 1'-0"

See wall framing plans for stud layout and material take off.

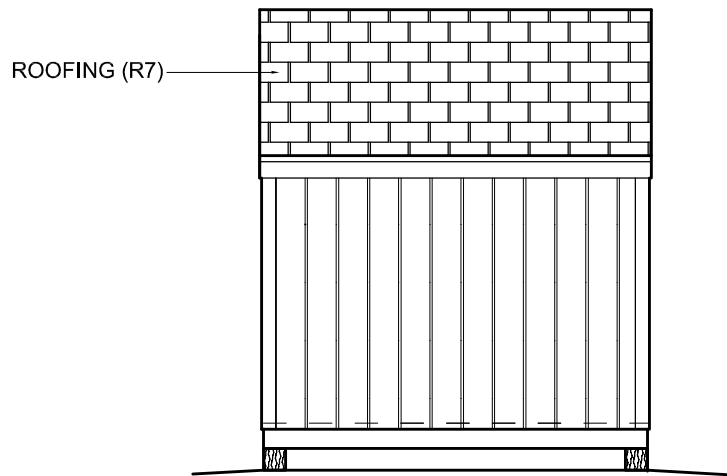


FRONT ELEVATION

RIGHT SIDE ELEVATION



REAR ELEVATION

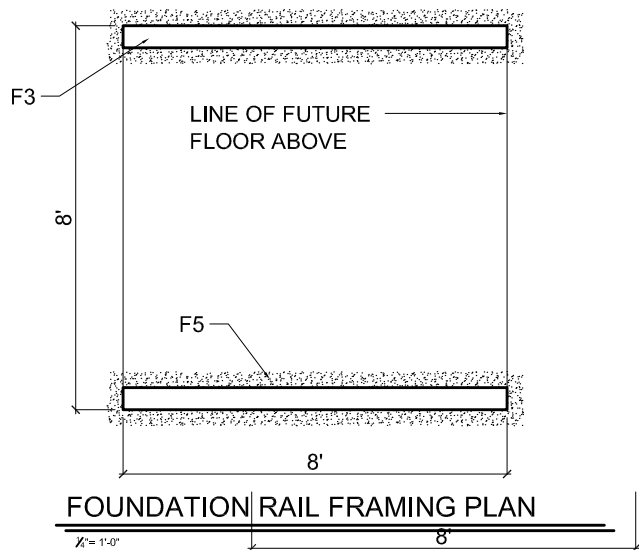


LEFT SIDE ELEVATION

#### SIDING AND ROOFING MATERIALS

CODE	DESCRIPTION	LENGTH	QTY.
W7	4ft. x 8ft. T1-11	per plan	8
T1	1x4 Trim	8'	8
T2	1x6 Trim	10'	4
R5	Roof Drip Edge	1½"x1½"x10'	4
R6	15lb. Roofing Felt	1 roll	
R7	Shingles	1 Square (100 SF)	
D1	3068 Pre hung factory built door		1

Ramp or stair materials are not shown

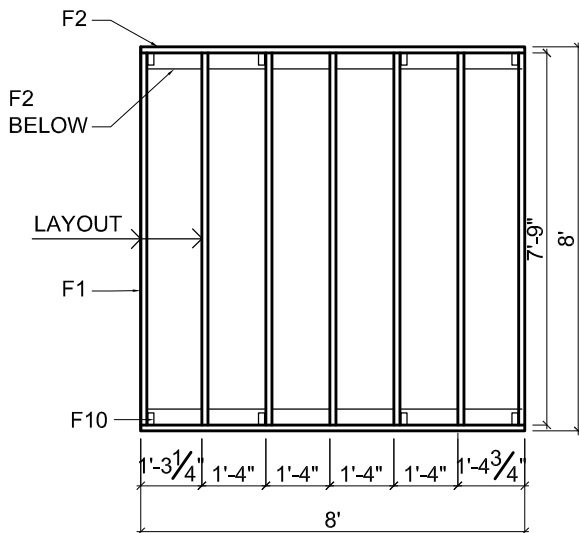


Skids can be set directly on compacted soil but is preferable to lay the 6x6 treated wood skids on beds of gravel which creates a solid base that allows ground water to drain away from the wood and is less likely to wash away and settle. Create the gravel beds by:

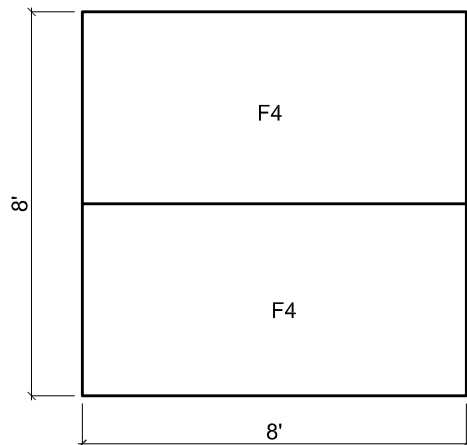
- Removing 2 to 3 inches of soil under each skid location.
- Fill the beds with gravel.
- Level the gravel and set the skids on the gravel
- Square up the outer skids and then center the center skid.

#### FOUNDATION MATERIALS

CODE	DESCRIPTION	LENGTH	QTY.
F3	6x6 Skid, treated	8'-0"	2
F5	1/2" Gravel		



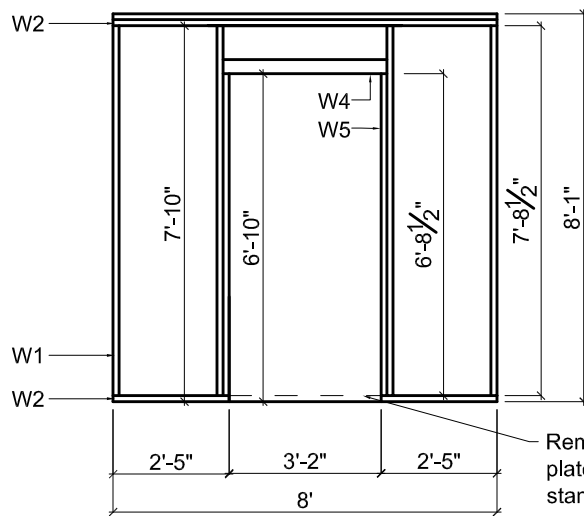
FLOOR FRAMING PLAN



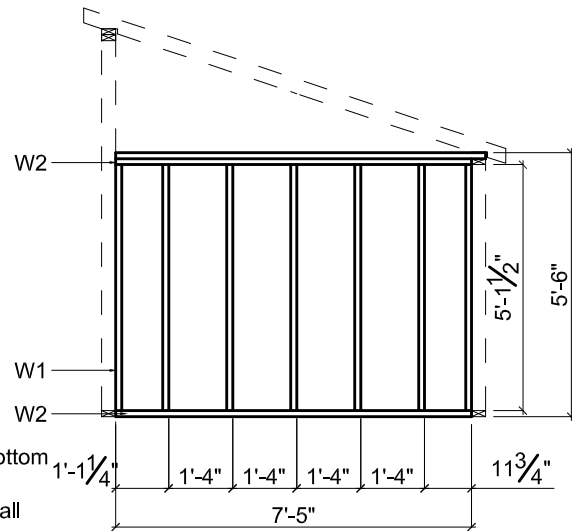
FLOOR SHEETING PLAN

FLOOR FRAMING MATERIALS

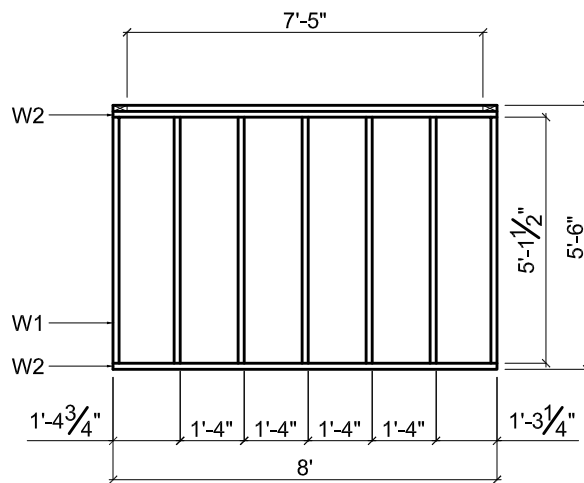
CODE	DESCRIPTION	LENGTH	QTY.
F1	2x6 Floor Joist	8'	7
F2	2x6 Rim Joist	8'-0"	2
F4	4'x8'x $\frac{3}{4}$ " O.S.B. T.&G.	4'x8'	2
F10	SIMPSON A23 CLIP		8



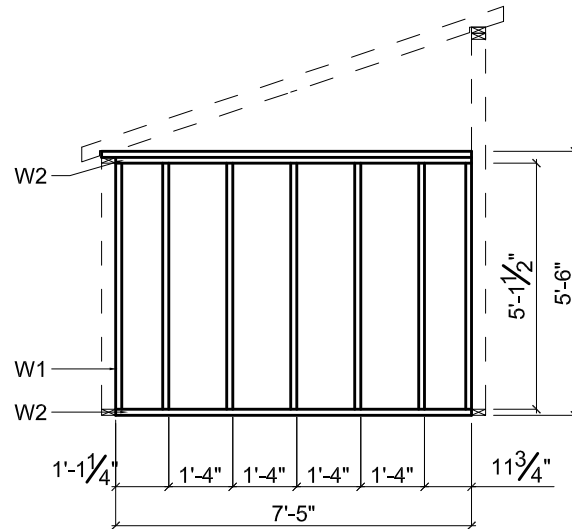
**FRONT WALL FRAMING PLAN**



**RIGHT WALL FRAMING PLAN**



**REAR WALL FRAMING PLAN**

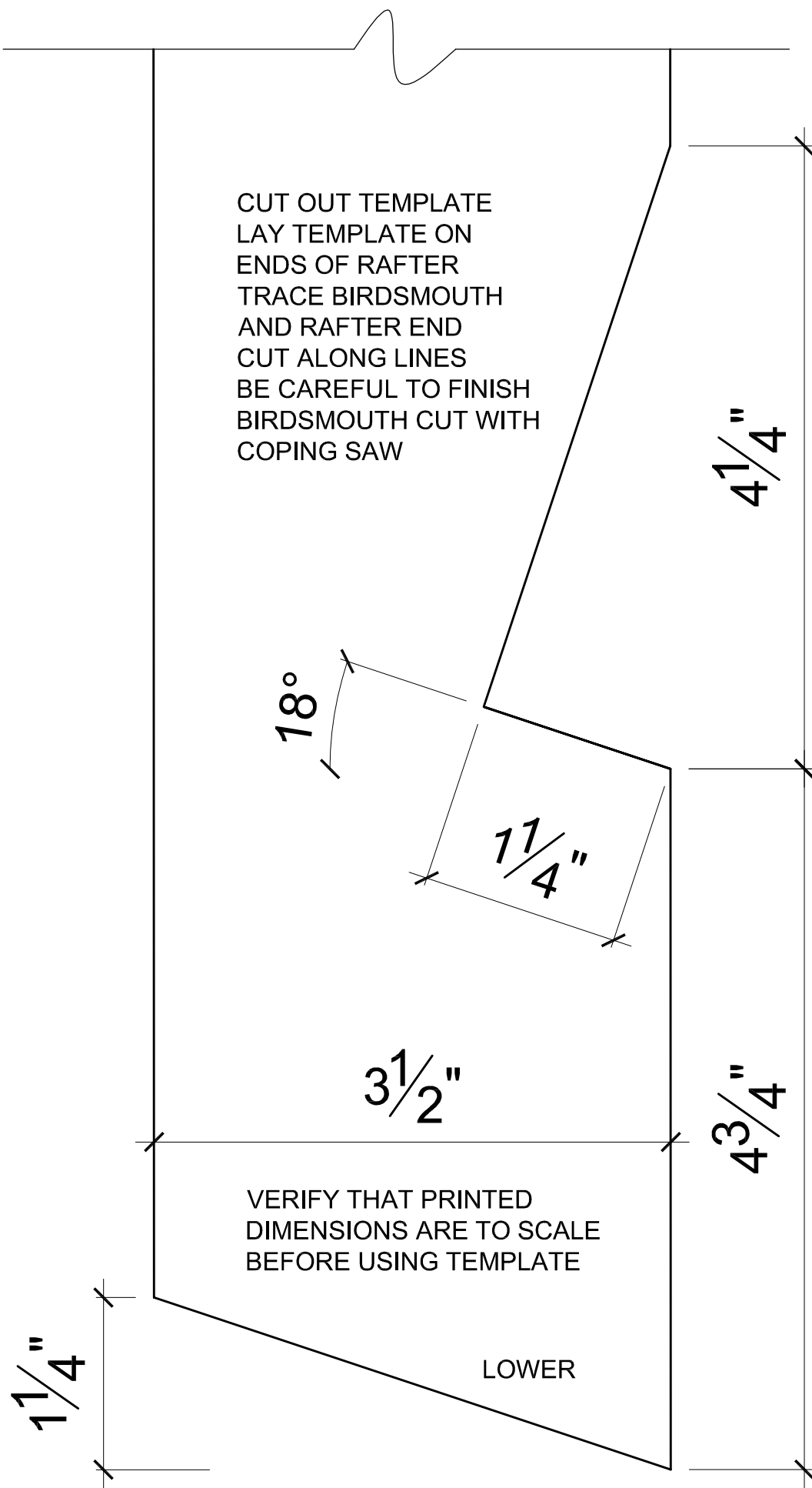


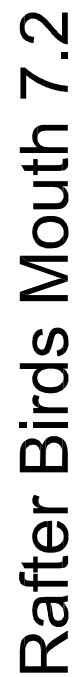
**LEFT WALL FRAMING PLAN**

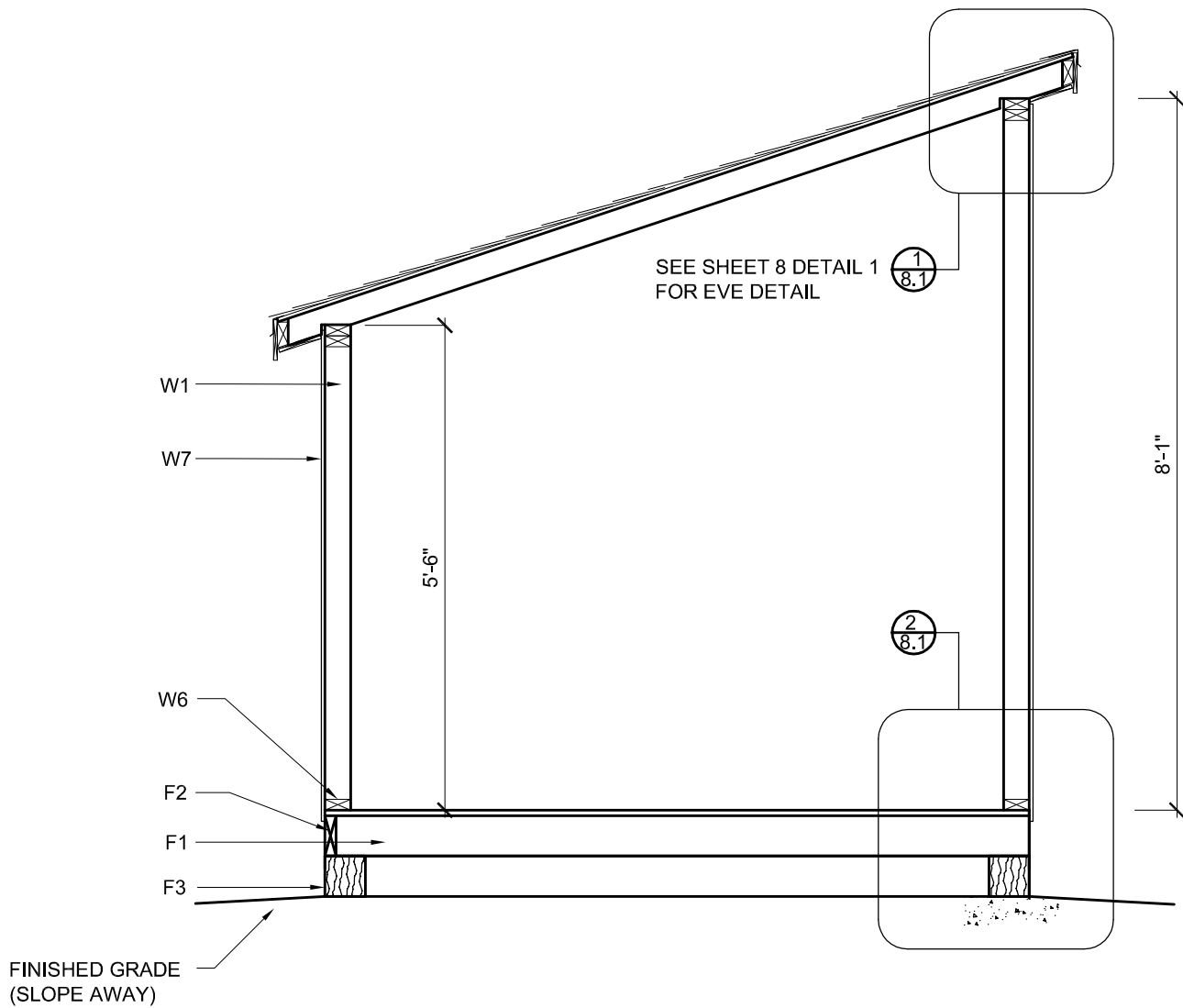
WALL FRAMING MATERIALS			
CODE	DESCRIPTION	LENGTH	QTY.
W1	2x4 Wall Stud	8'-0"	25
W2	2x4 Wall Plate	8'-0"	12
W4	Door Header	8'-0"	1
W5	Door Trimmer	8'-0"	2





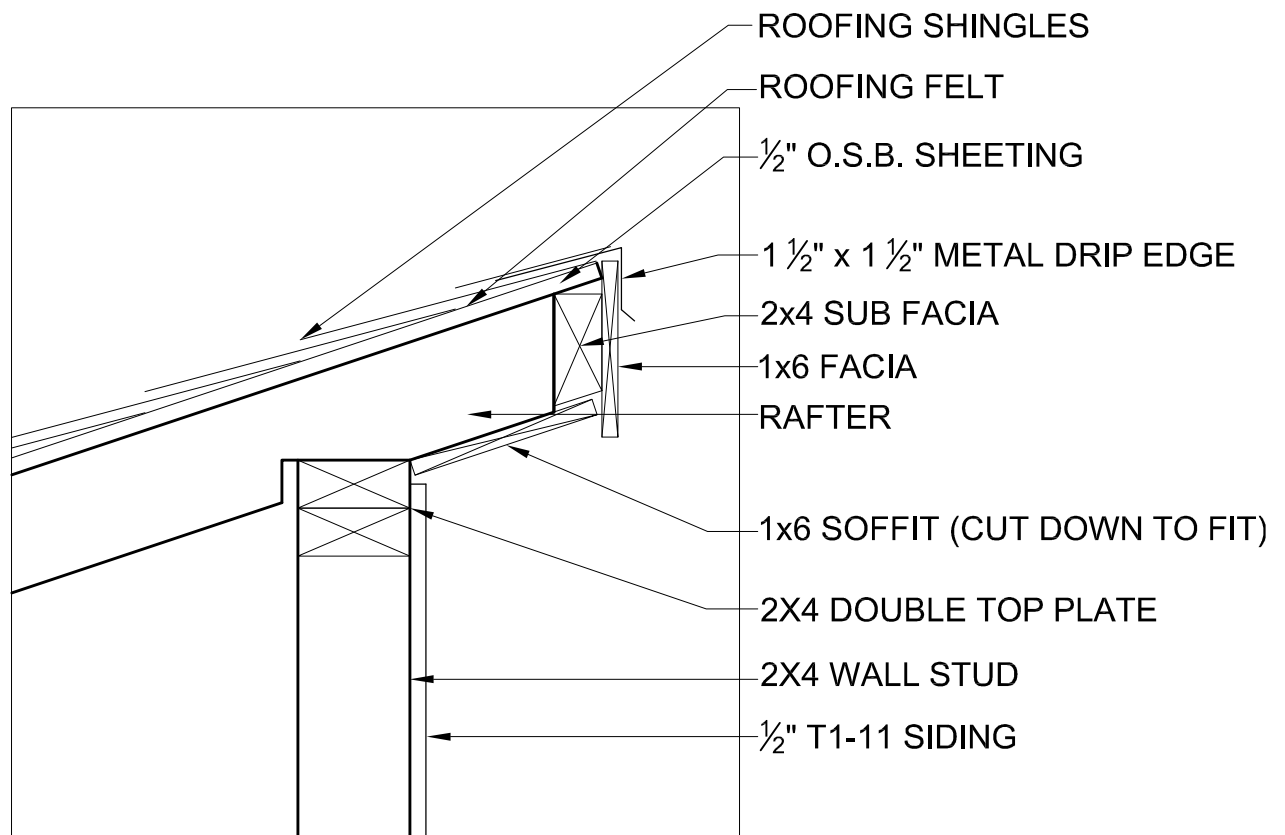




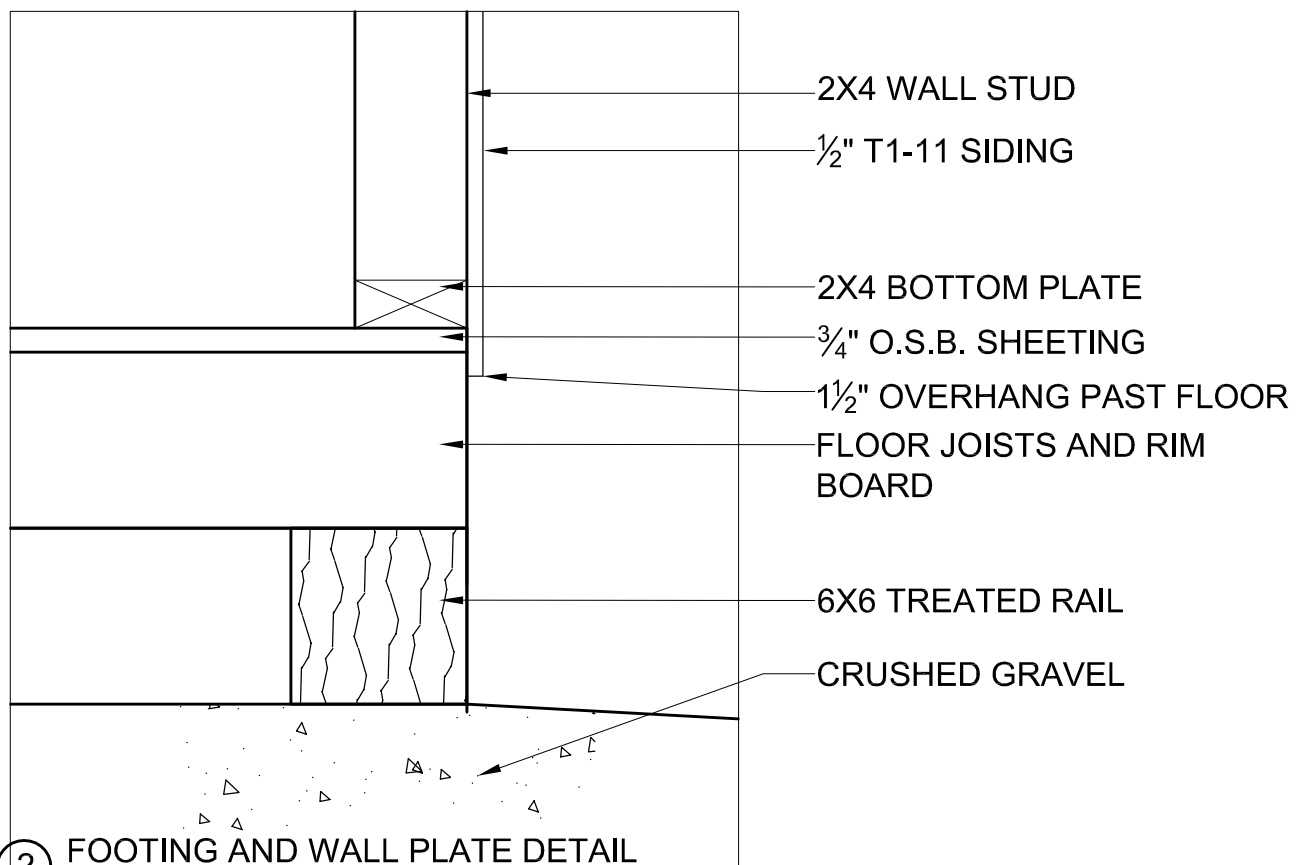


## BUILDING SECTION

$\frac{1}{4}" = 1'-0"$  See floor and wall plans for material call out definitions.



① ROOF EVE DETAIL



② FOOTING AND WALL PLATE DETAIL